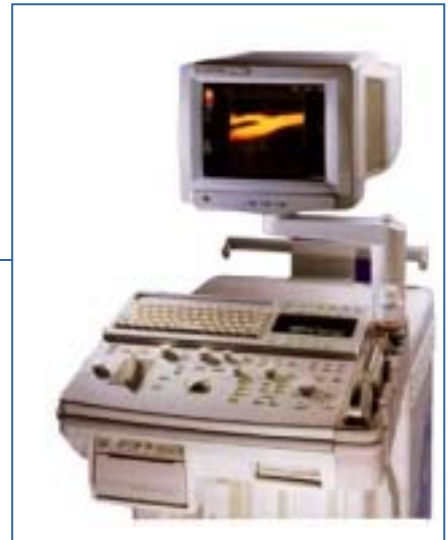


# LOGIQ 500 PRO SERIES

PROfessionalism, PROductivity, PROgress to meet your highest performance standards

Distinguished by excellent image quality, ease of use and advanced applications, the LOGIQ 500 PRO Series is designed to address your need for diagnostic confidence, cost-efficiency and long-term investment protection.



## Standard Features

- Digital Beamformer with Parallel Processing
- Adaptive Color Enhancement (ACE)
- Automatic Tissue Optimization (ATO)
- Thumbnails multi-image display and archiving
- DICOM compliance for seamless networking
- Tissue Harmonic Imaging
- High-frequency Micron Imaging
- Pulsatile Flow Doppler
- Real-time Doppler Auto Calc
- Fast, easy image management
- Triplex imaging

## Applications

- Abdominal
- Neonatal
- Cardiac
- Vascular
- Ob/Gyn
- Urology
- Surgery

## Specification

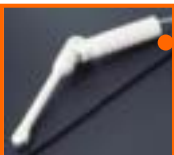
Dimension	541 x 937 x 1199 (1499max) mm (Width x Depth x Height)
Weight	397 lbs (without hardcopy device)
Imaging modes	B/M, B/D, B/CFM, B/CFM/M, B/CFM/D, B/B/CFM, B/CFM/M/D
Gray Scale	256 (8 bits) for B/W screen
Image Storage	Cine 32 frames (optional 160), 600 disk, 530 MOD(read/write)
Measurement	High Frequency Micron Imaging/ PFD : Pulsatile Flow Detection
Monitor	15" color monitor with Swivel/Tilt/Rotate/Height Adjust.
Power Supply	Power requirement: 110V, 50/60Hz; 220V, 50/60Hz.

## Available Transducers



**C364 (2.5-5.0MHz/90D Convex)**  
*Ob/Gyn, Abdomen, Cardiology*

**739L (5-10MHz/39mm Linear)**  
*Neonatal, Small parts & Vascular*



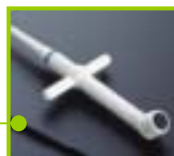
**E721 (4.3-8.6MHz/121D Endo-cavity)**  
*Ob/Gyn, Urology*

**C551 (3.7-7.4MHz/73D Convex)**  
*Ob/Gyn, Abdomen, Urology*

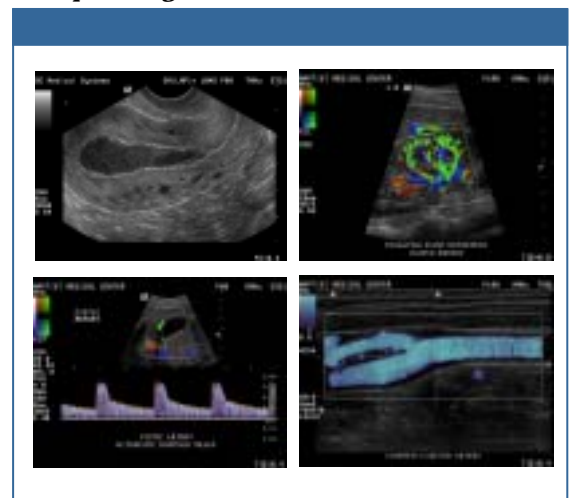


**S611 (3.6-8.6MHz/90D Sector)**  
*Cardiology, Head, Neonatal, Abdomen*

**CWD2 (2.0MHz/17D PW)**  
*Cardiac, Vascular*



## Sample Images



### Sertech America Corp.

3301 N.W 82nd Avenue,  
Miami, Florida 33122, U.S.A  
Tel 305-463-9123, Fax 305-463-9175  
e-mail : ultrasound@sertechusa.com