

SA 600

Quality Personal Convex Imaging
at a Price You Can Afford.

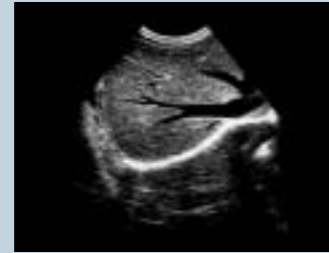


CT - USA600 - GR - 980926

Sample Scans



Abdominal - Kidney



Abdominal - Liver



OB/Gyn - Fetal image

Applications

- Abdominal imaging
- OB/Gyn imaging

Specifications

Scanning method	linear scanning electrical focusing type
Display modes	B Mode, B/B Mode, B/M Mode, M Mode, real-time and freezing Mode
Scanning Range	>85mmX200mm
Grey scales	>64, adjustable
Resolution	Lateral resolution 2mm, Longitudinal resolution 4mm
Scan line	>330lines/frame
Focusing	Four steps receiving and four steps transmitting
Frame rate	>30 frames/sec
Gain:	0-100 dB continuously variable
Character display	date, time, body mark, patient ID or more
Monitor	>40mm(5.5-inch)
Video out	PAL-D standard video out, BNC socket
DSC	512X512X6bits
Power consumption	<50W
Image right-left reverse function	
Image positive/negative reverse function	
Measuring function	Distance, circumference, area, heart rate or more
Image scroll function	
Puncture guide line	
Track ball	
Basic components and accessories	
Basic components	
Main unit	1 Sets
3.5MHz linear probe	1 pcs
Ultrasound gel	500ml
Track ball	1 pcs

Optional Accessories

- Probe extension unit with dual probe connectors
- 12-inch external monitor
- Sony UP-890-MD thermal video printer
- 24-volt internal battery (1 hr operation, 4-5 hr charge time)
- Mobile cart
- Removable external battery

Available Electronic Transducers

Convex Array



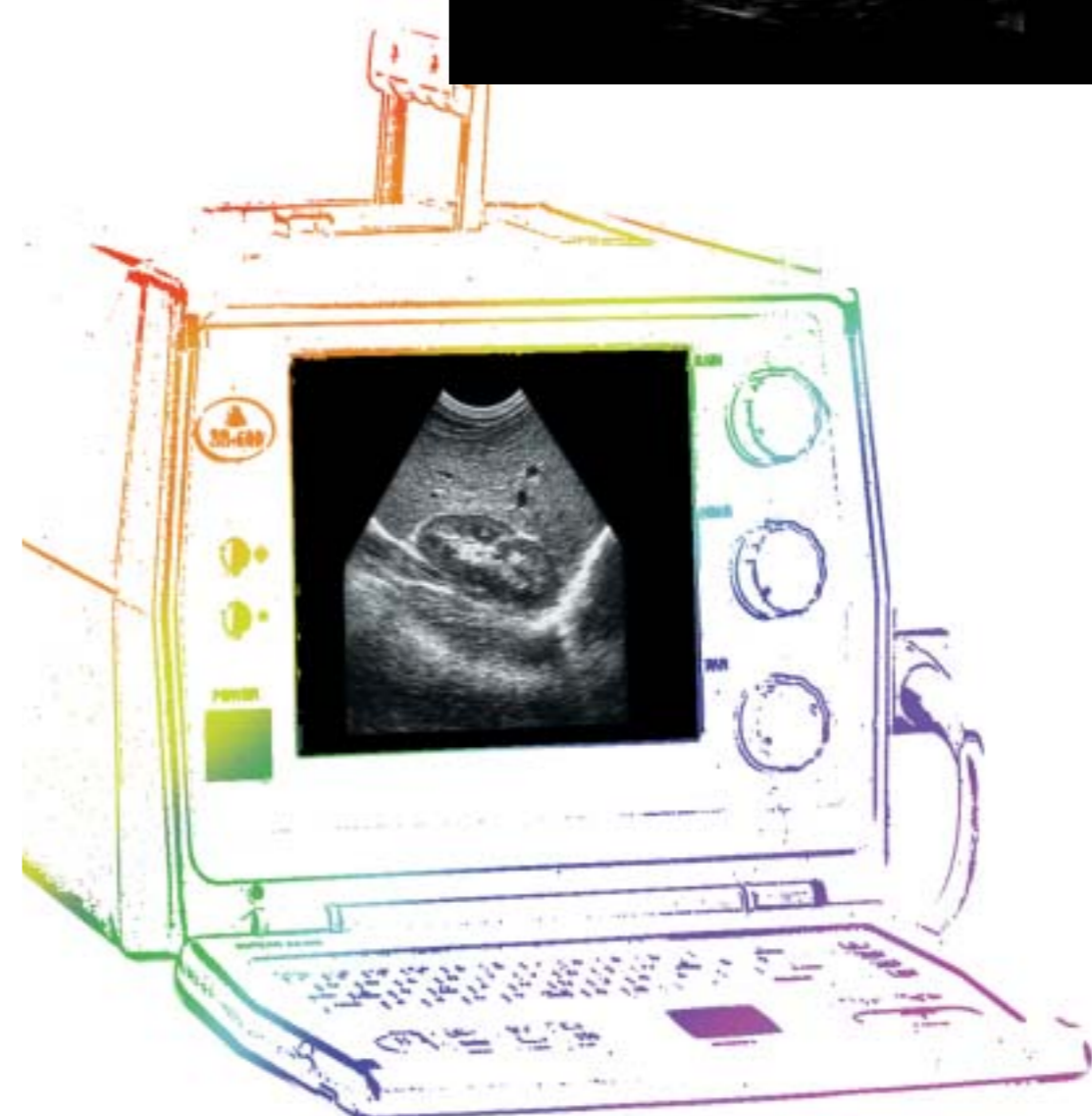
Linear Array



上海麦迪逊医疗器械有限公司
SHANGHAI MEDISON MEDICAL INSTRUMENTS CO., LTD.

※ Application for government approval still pending in some nations. Brochure presents system with options. Modification rights reserved. c 1998 MEDISON Co, Ltd.

地址:上海浦东金桥出口加工区T17-4, 新金桥路 230
ADD:JIN-QIAO EXPORT PROCESSING ZONE T17-4,
NEW JIN-QIAO ROAD 230,PUDONGNEWAREASHANGHAI
TEL:02-8990791 FAX:02-8990794 ZIPCODE:201206



SonoAce 600. Quality Personal Convex Imaging at a Price You Can Afford.

Who is SonoAce 600 designed for?

For hospitals and physicians on a budget.

Although there are numerous portable convex ultrasound scanners on the market, few can claim to offer quality convex imaging at a reasonable price. SonoAce 600 delivers superior quality imaging and functionality at a truly affordable price.

For physicians who demand versatility.

Whether it's used in an ambulance or outdoors, the emergency or delivery room, SonoAce 600 is exceptionally versatile thanks to a portable, compact design that makes checkups and diagnoses quick and efficient, particularly where space is limited.

For physicians who want their own personal scanner.

As a personal scanner for physicians, SonoAce 600 is the world's best-selling portable convex imaging system, delivering quality images and functionality at the right price.



Here's why SonoAce 600 is the best portable ultrasound choice.

It offers superior diagnostic images.

Unique technologies including ULA (Uniform Ladder Algorithm) of SonoAce 600 provide you with a superior image. ULA decreases digital artifacts as well as location and reconstruction errors by eliminating the coordinate transformation process while dynamic apodization, dynamic aperture and image synthesizer result in remarkable image quality.

It delivers expanded functionality at a linear price.

Cine Memory and Image Bank are unique SonoAce 600 optional features. Cine Memory offers continuous playback of up to 32 images while Image Bank supports temporary storage of 30 images. Compare and you'll find SonoAce 600 is a portable convex imaging system that offers both quality and maximum convenience at a linear price.



Cine Memory function

It delivers superior reliability.

SonoAce 600 uses custom-designed application specific integrated circuits or ASICs. These compact chips deliver the functionality of entire circuit boards, ensuring more reliable operation as well as reducing scanner size and weight.

Standard Circuitry



Custom ASIC



It offers superior ergonomics.

An ergonomic fold-up keyboard with a convenient built-in glidepointer makes SonoAce 600 exceptionally easy to use. The scanner system is also remarkably compact and lightweight thanks to custom ASIC technology, making transport easy.



■ Removable external battery (option)
• Provides convenient, 1 hr operation anywhere.



■ Unique Features

- Cine Memory of up to 32 images (option)
- Image Bank for temporary storage of 30 images (option)
- Triple frequency
- Real-time zoom (linear mode only)
- Histogram
- Cardiac software
- Upgraded OB Software
- -GA curve
- -Additional Tokyo 2.GA measurement