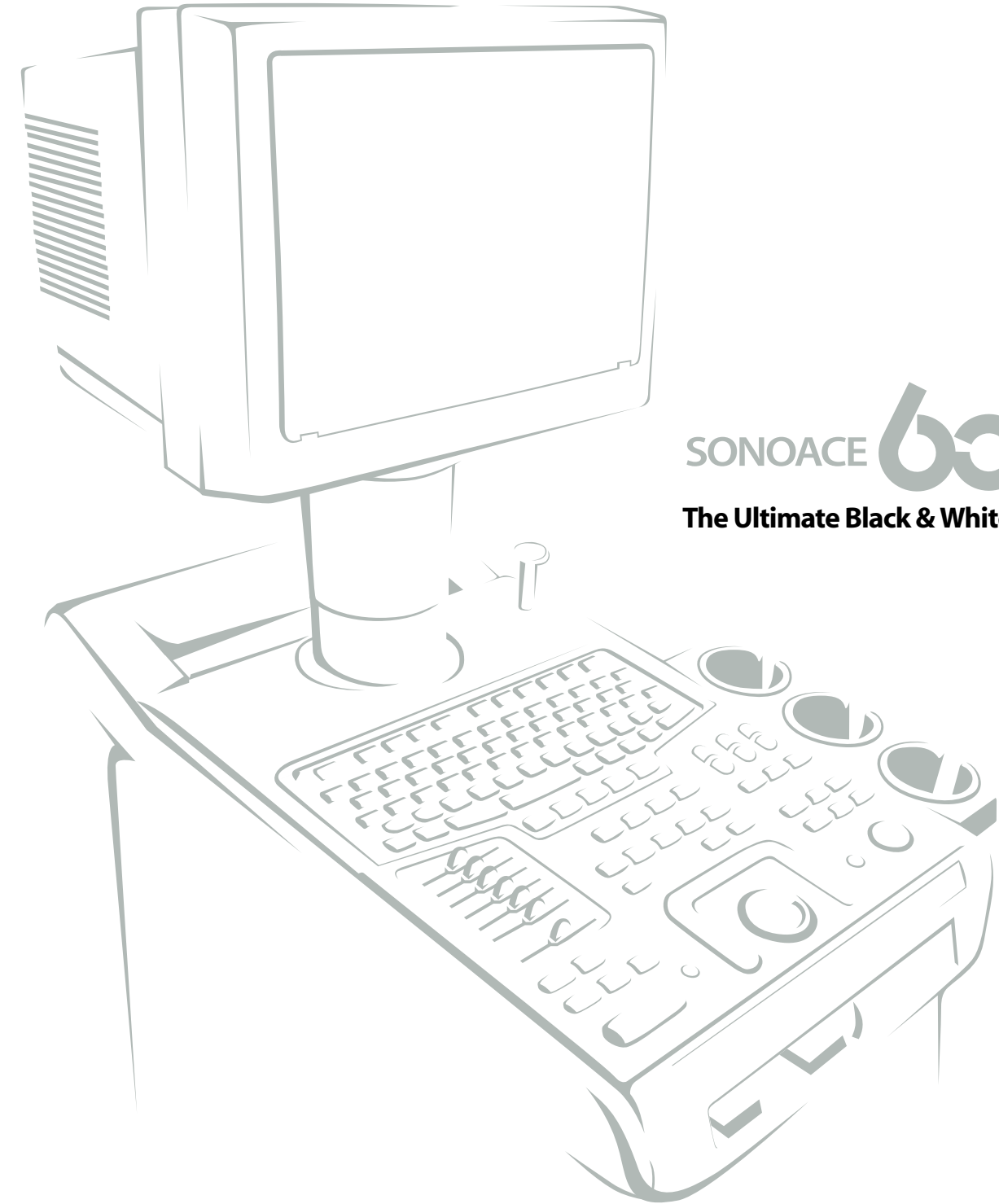




Medison Venture Tower, 997-4 Daechi-dong, Kangnam-gu, Seoul, Korea, 135-280  
 TEL: 82-2-2194-1400 FAX: 82-2-2194-1168  
 www.medison.com



www.medison.com



SONOACE **booc II**  
 The Ultimate Black & White Ultrasound System

■ Linear probes

■ Convex probes



HL 5-9ED



L 5-9EC



L 5-9ER



C 3-7ED



C 2-4ES



EC 4-9ES

Some equipment and software mentioned or shown in this brochure may be optional in certain markets. Medison reserves the right to make changes without notice. Government approval pending in some markets. All trademarks are property of their respective owners.

D I G I T A L 1 2 8 C H A N N E L

**Redefining the Standard of Excellence**



**The Only Black & White Ultrasound  
with Digital 128 Channel**



# The Ultimate Black & White Ultrasound System

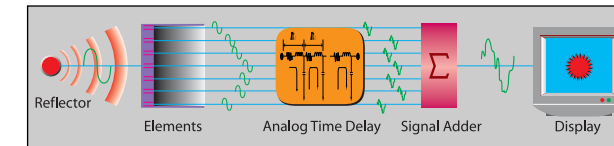


Medison, the innovator in medical science, proudly introduces the ultimate evolution in Black and White ultrasound system - the SonoAce 6000II. With its revolutionary responsive imaging technology, powered by Medison's Optimized Harmonic Imaging and Digital 128 Channel Beamforming, SonoAce 6000II produces crystal-clear images in fraction of time. Designed and committed for excellent performance, SonoAce 6000II guarantees its scientific breakthrough results. Contact your local Medison representative now and discover more about the new SonoAce 6000II's state of the art technology.

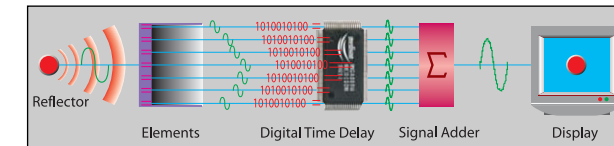
## Advanced Imaging Technology

### Digital Beamforming

The sophisticated technology of digital 128 beamforming realizes a crystal clear image by eliminating "the artifacts" through pixel-based focusing and digital implementation processing technology. By eliminating multiple reflections, non-linear attenuation and inaccurate delay time arise in analog systems.



• Analog beamforming process



• Digital beamforming process

### Freehand 3D™

Freehand 3D™ imaging technology of SonoAce 6000II offers realistic, freely rotating surface rendered fetal images. The volume rendering of Freehand 3D™ is a calculation process to visualize certain 3D structures of a scanned volume by means of 2D image.



### \*OHI™

SonoAce 6000II's state of the art Optimized Harmonic Imaging technology that enhances spatial resolution and contrast in the mid-field to enable detailed, accurate diagnosis of even the most difficult-to- image patients. OHI™, eliminates phase aberration of both transmitting and receiving signals.

\*OHI™(Optimized Harmonic Imaging™)

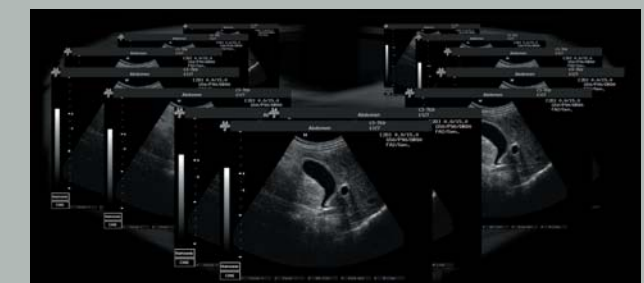


### Digital 128 Channel

Digital 128 Channel technology is exclusively included in the high end equipments only and produces unbelievable image quality. The new SonoAce 6000II produces excellent image quality from any depth perception with its amazing Digital 128 Channel technology. (number of channel is the main factor influencing image quality)

### 256 Frames CINE Memory

CINE function stores each frame image to the system memory up to maximum rate of 64 black and white frames of normal resolution images and Saves up to 256 frames in the memory for closer examination and plays back at variable speed.



# Leading the Edge of Digital B/W Ultrasound

## The World's first Ultrasound Scanner powered by Linux OS

SonoAce 6000II powered by Linux operating system that runs on 32-bit architecture, uses preemptive multitasking, protected memory and has rich support for TCP/IP. Internet networking enhance your digital connectivity.

## SonoView II™ Lite (DICOM 3.0 compatible)

Medison's DICOM 3.0 compatible Image Management Software SonoView II™ Lite allows physicians to store diagnosis records, preview, and send images to remote area. The capability of image filing function on SonoAce 6000II is up to 20,000 images and navigating the whole image is easy with the graphical user interface, with no Video Acquisition System for Mini PACS required. With SonoView II™ Lite, you can build the optimum Sono managerial environment to communicate images and related information to other users on the network.

## Ergonomic Design

Ergonomic designed control panel and monitor offer the best diagnostic circumstances and spacious location for peripherals.

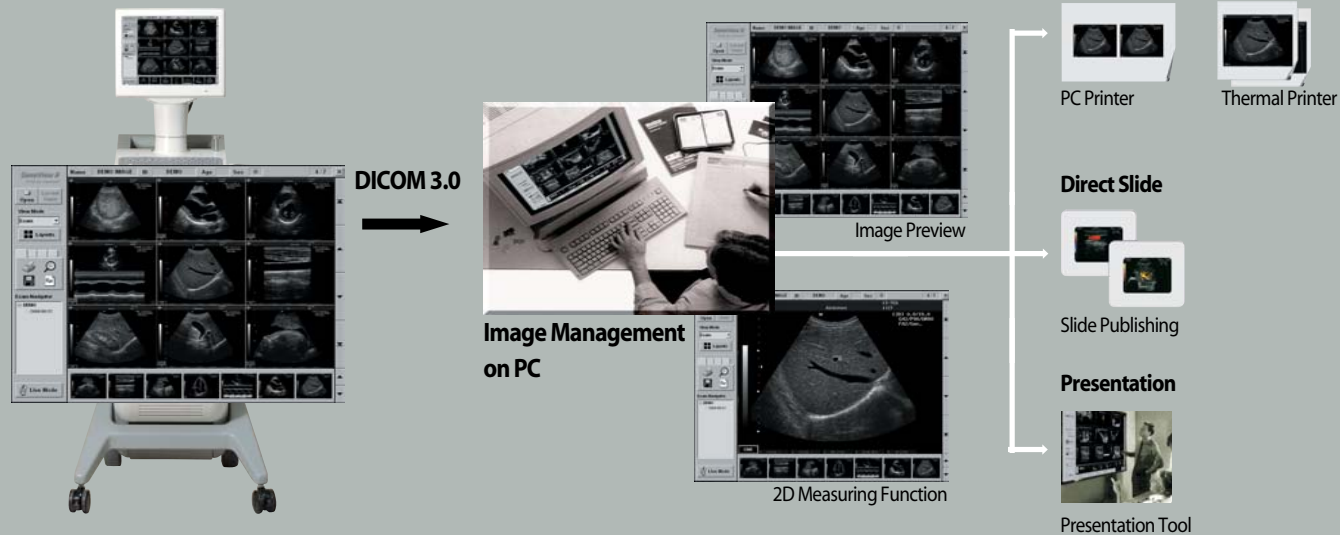
## Data Storage



Optional MO drive is available

## Anywhere, Anytime, Any view

### SonoView II™ Lite



- Image transferring, receiving and printing via DICOM network
- Ultrasound image review and measuring of 2D
- Measuring tools (Distance and ellipse measurement available)
- Direct e-mail sending function with image attachment

# Designed to Provide Excellent B/W Images



Gall Bladder (OHI™)



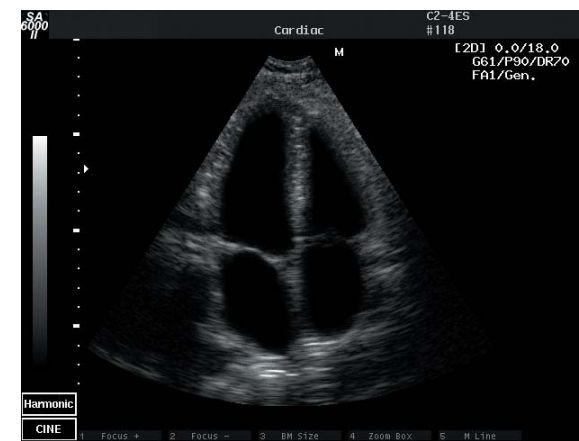
BPD



Carotid Artery



Fetal Vertebrae



Four Chamber



Kidney